



Planung & Installation

The Aquatic Fitness System is a versatile swim-in-place and all-year-round portable fitness center, which can be installed in a variety of ways. Its SteelStruct frame structure gives you the freedom to install your AFS above-ground or in-ground. The choice is yours. If you ever decide to move to a new place, bring the AFS unit with you as it is totally portable and self-standing.

Please find below a quick summary of the basic installation requirements*:

Concrete Pad. The AFS must be fully supported over the entire base. A typical installation on soil that will support 1,000 psi load, is 5 inch (13 cm) thick concrete with # 4 rebar on 18 inch (46 cm) centers. (Ref. Doc 138 Installation Instructions)*. Conditions at the site will determine the exact support requirements. Please contact your local contractor for adequate installation. Damages caused by inadequate support will not be covered by the warranty Doc 138.

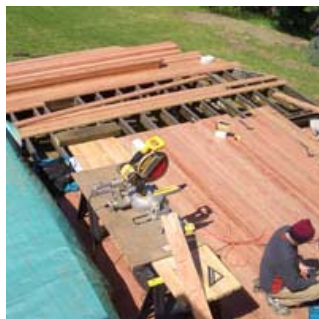
Excess Water. Normal use of the swim spa causes large amounts of water to splash out of the unit. Depending on the specific installation, additional provisions may have to be made for proper removal of this water.

Clearance Access: In order to better service your product, clearance for access to AFS must be 36 inches (92 cm) at equipment compartment and 24 inches (61 cm) around the remaining area.

Ventilation: If installed indoors, you must provide proper ventilation. Contact an HVAC professional to ensure proper humidity control. Installation should comply with requirements as stated in HVAC application handbook (ASHRA 1999b). For safety issues, it is important to put the cover of your AFS on everytime you are not inside of the unit.

You need a dedicated electric line of 240 V.





© 2008 World of Whirlpools - AFS Swimspas